

EURO Safety Appliance Testers

For testing safety measures in accordance with

- DIN EN 62638 (DIN VDE 0701-0702)
- DIN EN 62353 (DIN VDE 0751-1)

Handy lightweight testers for mobile use

Country specific mains socket and power plug
(e.g. D, CH, GB, F)



Internet

You will find data sheets and operating manuals relating to the products presented in this catalogue on our website at **Appliance Testers.**

You will find contact addresses at **Agencies.**

www.g-mw.de
info@g-mw.de



Table of Contents

		Appliance Tester TG basic 1	4-5
		EURO Appliance Tester TG euro 1 med/TG euro 1A med	6-7
		EURO Appliance Tester TG euro 1/TG euro 1A	8-9
		Appliance Tester TG uni 1/TG uni 1A	10-11
		Appliance Tester TE uni 1	12-13
		Appliance Tester TKG-DSM 0701-0702 TKG-DSM+ 0701-0702	14-15
		Active Three-Phase Adapter TGA Passive Three-Phase Adapter TGP	16-17
		MEBEDO Database Software Standard PC Software	18
		Accessories and Spare Parts	19



Product highlights

- ▶ Easy-to-handle, very light tester in a sturdy housing for mobile use
- ▶ Battery operation
- ▶ Can be supplied with country-specific test socket for all European countries – e.g. D, CH, F, GB
- ▶ Operation language D, GB, F, I, NL, CZ, PL
- ▶ Operation via rotary switch and start button
- ▶ Illuminated LCD display (option)
- ▶ Automatic test procedure
- ▶ Testing of extension cables, length adjustable
- ▶ Cable test (with IEC connector)
- ▶ Suitable for technically trained persons, good/bad plain text display



TG basic 1

Appliance Tester TG basic 1

**Testing device for checking protective measures
for mobile electrical equipment in accordance with
DIN EN 62638/DIN VDE 0701-0702.**

Measuring functions

- Protective conductor resistance
- Insulation resistance
- Substitute leakage current
- Cable test

Scope of delivery

- 1x appliance tester
- 1x safety measurement cable 1,5 m with crocodile clip and safety test tip
- 1x IEC cable
- 1x operating manual
- 1x battery set (6x 1.5 V AA alkaline)
- 1x carrying bag

Tester information

TG basic 1

- Intuitive user guidance
- Clear display "Test OK/Test not OK" on completing the test
- Display brightness setting in 4 steps (option)
- Hand-held device with protection class II
- Auto power off function
- Mains voltage measurement (L-N, L-PE, N-PE)
- Cable test (L-N) with IEC connector
- ▶ Can be supplied with country-specific test socket for all European countries – e.g. D, CH, F, GB
- Operation language in D, GB, F, I, NL, CZ, PL, other languages as option



TG basic 1

Technical data

Display

Graphic LCD display, 160 × 104 pixels,
optional backlight

Display ranges

Protective conductor resistance	0,05...5,0 Ω
Test current	> \pm 200 mA DC with automatic reversal of polarity
Open-circuit voltage	4,5 V...8,5 V
Insulation resistance	0,100...20,00 M Ω
Test voltage/current	\geq 500 V DC / \geq 1 mA PC I and PC II
Substitute leakage current	0,100...20,000 mA
Test voltage	25-40 V AC
Mains voltage measurement	195...250 V AC (L-N, L-PE, N-PE)

General

Limit value indication	visually and acoustically
Overvoltage category	CAT II/300 V
Degree of pollution	2
Protection degree	IP 40
Power supply	6x AA 1,5 V alkaline batteries or 6x AA 1,2 V NiMH rechargeable batteries
Number of measurements	approx. 1500 per battery set, Auto power off
Dimensions (L x W x H)	ca. 270 x 110 x 50 mm
Weight	approx. 800 g
Electrical safety according to	DIN VDE 0404 Parts 1, 2 DIN VDE 0411-1/EN 61010-1 DIN VDE 0413/EN 61557 Parts 1, 2, 4

Order information

TG basic 1

Item no. 63000 00000

TG basic 1 with backlight

Item no. 63000 00001

Recommended accessories

Passive three-phase adapter TGP
Item no. 79200 18690

Charger for NiMH batteries AA 1.2 V
incl. rechargeable battery pack
(8 pcs. AA 1,2V) 2050 mA/h
Item no. 79100 86151

Rechargeable battery set (4 pcs. AA 1,2V)
2050 mA/h
Item no. 54121 86008

Safety measurement cable 2,5 m
Item no. 79200 18682

Inspection sticker "Next test date"
30 mm, yellow, card of 12 pieces
Item no. 22067 86410



Product highlights

- ▶ Handy lightweight tester for mobile use
- ▶ Europe wide applicable selectable control language – D, GB, F, I
- ▶ Deliverable with country specific mains socket and power plug (e.g. D, CH, F, GB)
- ▶ Complete check for medical electronic devices or medical electronic systems (Type B, BF, CF) in accordance with DIN EN 62353 / DIN VDE 0751-1
- ▶ Expert mode – quick testing procedure
- ▶ Connection for barcode scanner for reading – in the test object's ID numbers and choosing defined test procedures
- ▶ Device operation via touch screen
- ▶ Help functions and electrical connection diagrams can be accessed
- ▶ Measuring direct method or as differential current
- ▶ Adjustable limit value for protective conductor resistance measurement up to $0.9\ \Omega$ – for extension cables up to 50 m
- ▶ SD card for storing and transferring measurement data
- ▶ Test o.k. or not o.k. message allows the device to be used by persons with electro-technical training



TG euro 1 med

EURO Appliance Tester TG euro 1 med/TG euro 1A med

Appliance tester for testing medical electronic devices (ME devices) or medical electronic systems (ME systems) in accordance with DIN EN 62353/DIN VDE 0751-1 and for testing safety measures in transportable electrical equipment in accordance with DIN EN 62638/DIN VDE 0701-0702.

Measuring functions

- Protective conductor resistance
- Insulation resistance
- Substitute leakage current
- Device substitute leakage current/ substitute leakage current from the applied part
- Device leakage current/leakage current from the applied part
- Protective conductor – and touch current
- Power, voltage, current, power factor, frequency

Scope of delivery:

- 1x Appliance tester TG euro 1 med or TG euro 1A med
- 1x Safety test line
- 1x Safety test tip
- 1x Crocodile clip
- 1x SD memory card
- 1x USB cable
- 1x Operating manual
- 1x CD-ROM with Windows® standard PC software (D, GB, F)

Tester information

- Memory for app. 50,000 equipment tests (SD card 2 GB)
- Intuitive operator guidance
- Manual mode, automatic mode, expert mode, test series mode
- Test examination for the protection of the tester against defect specimens
- Test o.k. or test not o.k. text message on screen
- Test lead compensation
- USB interface – for sending measured data
- RS 232 interface – for connecting optional barcode scanner
- included in delivery: Standard PC software for log print outs



TG euro 1A med

Technical data

Display	Backlit matrix pixel LCD, 240 x 128 pixels (touch screen)
----------------	---

Display ranges

Protective conductor resistance	0.1...2.0 Ω
Test current/voltage	> 200 mA / > 4 V DC
Insulation resistance	0.1...20 MΩ (CF 0.1...200 MΩ)
Test voltage/current	≥ 500 V DC / > 1 mA
Substitute leakage current	0.02...20 mA
Device/applied part substitute leakage current	0.02...15 mA
Test voltage	approx. 230 V AC
Protective conductor current	0.25...20 mA
Device leakage current	0.02...9 mA
Touch current	0.1...2 mA
Measuring principle	direct or as differential current
Leakage current from the applied part (mains voltage on applied part)	0.02...15 mA
Power	0...3.7 kVA
Voltage	195...250 V
Current	0...16 A
Power factor	0 cap...1...0 ind.

General

Mains fuse	F 16 A
Memory capacity (internal)	16 MB
Interfaces	USB, RS 232 for barcode scanner
Memory card	SD 2 GB
Limit value indication	optically and acoustically
Overvoltage category	CAT II 300 V
Degree of pollution	2
Protection degree	IP 40
Power supply	230 V +10%/-15% 50 Hz
Consumption of auxiliaries	approx. 10 VA
Dimensions (L x W x H)	300 x 250 x 130 mm TG euro 1 med 360 x 285 x 175 mm TG euro 1A med
Weight	approx. 3.1 kg/4.2 kg
Electrical safety according to	DIN VDE 0404 Parts 1, 2, 3 DIN VDE 0411-1/EN 61010-1 DIN VDE 0413/EN 61557 Parts 1, 2, 4

Order information:

TG euro 1 med

TG euro 1 med D
Item no. 61000 00610
Mains socket and power plug D

TG euro 1 med D+
Item no. 61000 00611
Mains socket and power plug D
included AddIn for optional
Mebedo data bank software

TG euro 1 med CH
Item no. 61000 00612
Mains socket and power plug CH

TG euro 1 med F
Item no. 61000 00613
Mains socket and power plug F

TG euro 1 med GB
Item no. 61000 00614
Mains socket and power plug GB

TG euro 1A med

TG euro 1A med D
Item no. 61000 00710
Mains socket and power plug D

TG euro 1A med D+
Item no. 61000 00711
Mains socket and power plug D
included AddIn for optional
Mebedo data bank software

TG euro 1A med CH
Item no. 61000 00712
Mains socket and power plug CH

TG euro 1A med F
Item no. 61000 00713
Mains socket and power plug F

TG euro 1A med GB
Item no. 61000 00714
Mains socket and power plug GB

Recommended accessories

(not included in delivery)

Barcode scanner
Item no. 79100 86044

Active three-phase adapter TGA
Item no. 79200 18691

Passive three-phase adapter TGP
Item no. 79200 18690

Adapter for checking extension cables
Item no. 79200 18680

12 unit adapter (for test leads)
Item no. 61000 01001

Adapter for IEC connector
Item no. 79200 18660

Brush probe
(for touchable conductive rotating parts)
Item no. 79100 86049

Inspection sticker "Next test date"
30 mm, yellow, card of 12 pieces
Item no. 22067 86410

Product highlights

- ▶ Handy lightweight tester for mobile use
- ▶ Europe wide applicable selectable control language – D, GB, F, I
- ▶ Deliverable with country specific mains socket and power plug (e.g. D, CH, F, GB)
- ▶ Expert mode – quick testing procedure
- ▶ Connection for barcode scanner for reading – in the test object's ID numbers and choosing defined test procedures
- ▶ Device operation via touch screen
- ▶ Help functions and electrical connection diagrams can be accessed
- ▶ Measuring direct method or as differential current
- ▶ Adjustable limit value for protective conductor resistance measurement up to $0.9\ \Omega$ – for extension cables up to 50 m
- ▶ SD card for storing and transferring measurement data
- ▶ Test o.k. or not o.k. message allows the device to be used by persons with electro-technical training



TG euro 1

EURO Appliance Tester TG euro 1/TG euro 1A

Appliance tester for testing safety measures in transportable electrical equipment in accordance with DIN EN 62638/ DIN VDE 0701-0702.

Measuring functions

- Protective conductor resistance
- Insulation resistance
- Substitute leakage current
- Protective conductor – and touch current
- Power, voltage, current, power factor, frequency

Scope of delivery:

- 1x Appliance tester TG euro 1 or TG euro 1A
- 1x Safety test line
- 1x Safety test tip
- 1x Crocodile clip
- 1x SD memory card
- 1x USB cable
- 1x Operating manual
- 1x CD-ROM with Windows® standard PC software (D, GB, F)

Tester information

- Memory for app. 50,000 equipment tests (SD card 2 GB)
- Intuitive operator guidance
- Manual mode, automatic mode, expert mode, test series mode
- Test examination for the protection of the tester against defect specimens
- Test o.k. or test not o.k. text message on screen
- Test lead compensation
- USB interface – for sending measured data
- RS 232 interface – for connecting optional barcode scanner
- included in delivery: Standard PC software for log print outs



TG euro 1A

Technical data

Display

Backlit matrix pixel LCD, 240 x 128 pixels
(touch screen)

Display ranges

Protective conductor resistance	0.1...2.0 Ω
Test current/voltage	> 200 mA / > 4 V DC
Insulation resistance	0.1...20 M Ω
Test voltage/current	\geq 500 V DC / > 1 mA
Substitute leakage current	0.02...20 mA
Test voltage	approx. 230 V AC
Protective conductor current	0.25...20 mA
Touch current	0.1...2 mA
Measuring principle	direct or as differential current
Power	0...3.7 kVA
Voltage	195...250 V
Current	0...16 A
Power factor	0 cap...1...0 ind.

General

Mains fuse	F 16 A
Memory capacity (internal)	16 MB
Interfaces	USB, RS 232 for barcode scanner
Memory card	SD 2 GB
Limit value indication	optically and acoustically
Overvoltage category	CAT II 300 V
Degree of pollution	2
Protection degree	IP 40
Power supply	230 V +10%/-15% 50 Hz
Consumption of auxiliaries	approx. 10 VA
Dimensions (L x W x H)	300 x 250 x 130 mm TG euro 1 360 x 285 x 175 mm TG euro 1A
Weight	approx. 3.1/4.2 kg
Electrical safety according to	DIN VDE 0404 Parts 1, 2 DIN VDE 0411-1/EN 61010-1 DIN VDE 0413/EN 61557 Parts 2, 4

Order information:

TG euro 1

TG euro 1 D
Item no. 61000 00600
Mains socket and power plug D
TG euro 1 D+
Item no. 61000 00601
Mains socket and power plug D
included AddIn for optional
Mebedo data bank software
TG euro 1 CH
Item no. 61000 00602
Mains socket and power plug CH
TG euro 1 F
Item no. 61000 00603
Mains socket and power plug F
TG euro 1 GB
Item no. 61000 00604
Mains socket and power plug GB

TG euro 1A

TG euro 1A D
Item no. 61000 00700
Mains socket and power plug D
TG euro 1A D+
Item no. 61000 00701
Mains socket and power plug D
included AddIn for optional
Mebedo data bank software
TG euro 1A CH
Item no. 61000 00702
Mains socket and power plug CH
TG euro 1A F
Item no. 61000 00703
Mains socket and power plug F
TG euro 1A GB
Item no. 61000 00704
Mains socket and power plug GB

Recommended accessories

(not included in delivery)

Barcode scanner
Item no. 79100 86044
Active three-phase adapter TGA
Item no. 79200 18691
Passive three-phase adapter TGP
Item no. 79200 18690
Adapter for checking extension cables
Item no. 79200 18680
Adapter for IEC connector
Item no. 79200 18660
Brush probe
(for touchable conductive rotating parts)
Item no. 79100 86049
Inspection sticker "Next test date"
30 mm, yellow, card of 12 pieces
Item no. 22067 86410

Product highlights

- ▶ Handy lightweight tester for mobile use
- ▶ Deliverable with country specific mains socket and power plug (optional)
- ▶ Connection for barcode scanner for reading – in the test object's ID numbers
- ▶ Device operation via touch screen
- ▶ Help functions and electrical connection diagrams can be accessed
- ▶ Measuring direct method or as differential current
- ▶ Adjustable limit value for protective conductor resistance measurement up to $0.9\ \Omega$ – for extension cables up to 50 m
- ▶ SD card for storing and transferring measurement data
- ▶ Test o.k. or not o.k. message allows the device to be used by persons with electro-technical training



TG uni 1

Appliance Tester TG uni 1/TG uni 1A

Appliance tester for testing safety measures in transportable electrical equipment in accordance with DIN EN 62638/ DIN VDE 0701-0702.

Measuring functions

- Protective conductor resistance
- Insulation resistance
- Substitute leakage current
- Protective conductor and touch current
- Power, voltage, current, power factor, frequency

Scope of delivery:

- 1x Appliance tester TG uni 1 or TG uni 1A
- 1x Safety test line
- 1x Safety test tip
- 1x Crocodile clip
- 1x SD memory card
- 1x USB cable
- 1x Operating manual
- 1x CD-ROM with Windows® standard PC software (D, GB, F)

Tester information

- Memory for app. 50,000 equipment tests (SD card 2 GB)
- Intuitive operator guidance
- Manual mode, automatic mode, test series mode
- Test examination for the protection of the tester against defect specimens
- Test o.k. or test not o.k. text message on screen
- Test lead compensation
- USB interface – for sending measured data
- RS 232 interface – for connecting optional barcode scanner
- included in delivery: Standard PC software for log print outs



TG uni 1A

Order information:

TG uni 1

TG uni 1
Item no. 61000 00100
Appliance tester in the case 300 mm

TG uni 1+
Item no. 61000 00105
Appliance tester in the case 300 mm,
included AddIn for optional
Mebedo data bank software

TG uni 1A

TG uni 1A
Item no. 61000 00200
Appliance tester in the case 360 mm
with IEC connector

TG uni 1A+
Item no. 61000 00205
Appliance tester in the case 360 mm
with IEC connector, included AddIn
for optional Mebedo data bank
software

Recommended accessories

(not included in delivery)

Barcode scanner
Item no. 79100 86044

Active three-phase adapter TGA
Item no. 79200 18691

Passive three-phase adapter TGP
Item no. 79200 18690

Adapter for checking extension cables
Item no. 79200 18680

Adapter for IEC connector
Item no. 79200 18660

Brush probe
(for touchable conductive rotating parts)
Item no. 79100 86049

Inspection sticker "Next test date"
30 mm, yellow, card of 12 pieces
Item no. 22067 86410

Technical data

Display	Backlit matrix pixel LCD, 240 x 128 pixels (touch screen)
----------------	--

Display ranges

Protective conductor resistance	0.1...2.0 Ω
Test current/voltage	> 200 mA / > 4 V DC
Insulation resistance	0.2...20 M Ω
Test voltage/current	\geq 500 V DC / > 1 mA
Substitute leakage current	0.02...20 mA
Test voltage	approx. 230 V AC
Protective conductor current	0.25...20 mA
Touch current	0.1...2 mA
Measuring principle	direct or as differential current
Power	0...3.7 kVA
Voltage	195...250 V
Current	0...16 A
Power factor	0 cap...1...0 ind.

General

Mains fuse	F 16 A
Memory capacity (internal)	16 MB
Interfaces	USB, RS 232 for barcode scanner
Memory card	SD 2 GB
Limit value indication	optically and acoustically
Overvoltage category	CAT II 300 V
Degree of pollution	2
Protection degree	IP 40
Power supply	230 V +10%/-15% 50 Hz
Consumption of auxiliaries	approx. 10 VA
Dimensions (L x W x H)	300 x 250 x 130 mm TG unit 1 360 x 285 x 175 mm TG unit 1A
Weight	approx. 3.1/4.2 kg
Electrical safety according to	DIN VDE 0404 Parts 1, 2 DIN VDE 0411-1/EN 61010-1 DIN VDE 0413/EN 61557 Parts 2, 4

Product highlights

- ▶ Lightweight tester for installation in the control panel or in the case
- ▶ Deliverable with country specific mains socket (optional)
- ▶ Connection for barcode scanner for reading – in the test object's ID numbers
- ▶ Device operation via touch screen
- ▶ Help functions and electrical connection diagrams can be accessed
- ▶ Measuring direct method or as differential current
- ▶ Adjustable limit value for protective conductor resistance measurement up to $0.9\ \Omega$ – for extension cables up to 50 m
- ▶ SD card for storing and transferring measurement data
- ▶ Test o.k. or not o.k. message allows the device to be used by persons with electro-technical training



TE uni 1

Appliance Tester TE uni 1

Appliance tester for testing safety measures in transportable electrical equipment in accordance with DIN EN 62638/ DIN VDE 0701-0702.

Measuring functions

- Protective conductor resistance
- Insulation resistance
- Substitute leakage current
- Protective conductor and touch current
- Power, voltage, current, power factor, frequency

Scope of delivery:

- 1x Appliance tester TE uni 1
- 1x Safety test line
- 1x Safety test tip
- 1x Crocodile clip
- 1x SD memory card
- 1x USB cable
- 1x Operating manual
- 1x CD-ROM with Windows® standard PC software (D, GB, F)

Tester information

- Memory for app. 50,000 equipment tests (SD card 2 GB)
- Intuitive operator guidance
- Manual mode, automatic mode, test series mode
- Test examination for the protection of the tester against defect specimens
- Test o.k. or test not o.k. text message on screen
- Test lead compensation
- USB interface – for sending measured data
- RS 232 interface – for connecting optional barcode scanner
- included in delivery: Standard PC software for log print outs



TE uni 1

Technical data

Display	Backlit matrix pixel LCD, 240 x 128 pixels (touch screen)
----------------	---

Display ranges

Protective conductor resistance	0.1...2.0 Ω
Test current/voltage	> 200 mA / > 4 V DC
Insulation resistance	0.1...20 M Ω
Test voltage/current	\geq 500 V DC / > 1 mA
Substitute leakage current	0.02...20 mA
Test voltage	approx. 230 V AC
Protective conductor current	0.25...20 mA
Touch current	0.1...2 mA
Measuring principle	direct or as differential current
Power	0...3.7 kVA
Voltage	195...250 V
Current	0...16 A
Power factor	0 cap...1...0 ind.

General

Mains fuse	F 16 A
Memory capacity (internal)	16 MB
Interfaces	USB, RS 232 for barcode scanner
Memory card	SD 2 GB
Limit value indication	optically and acoustically
Overvoltage category	CAT II 300 V
Degree of pollution	2
Protection degree	IP 20
Power supply	230 V +10%/-15% 50 Hz
Consumption of auxiliaries	approx. 10 VA
Dimensions (L x W x H)	150 x 150 x 80 mm
Weight	approx. 1.2 kg
Electrical safety according to	DIN VDE 0404 Parts 1, 2 DIN VDE 0411-1/EN 61010-1 DIN VDE 0413/EN 61557 Parts 2, 4

Order information:

TE uni 1

Item no. 61000 00150

Appliance tester for installation in the control panel or in the case

TE uni 1+

Item no. 61000 00155

Appliance tester for installation in the control panel or in the case, included AddIn for optional Mebedo data bank software

Recommended accessories

(not included in delivery)

Barcode scanner

Item no. 79100 86044

Active three-phase adapter TGA

Item no. 79200 18691

Passive three-phase adapter TGP

Item no. 79200 18690

Adapter for checking extension cables

Item no. 79200 18680

Adapter for IEC connector

Item no. 79200 18660

Brush probe

(for touchable conductive rotating parts)

Item no. 79100 86049

Inspection sticker "Next test date"

30 mm, yellow, card of 12 pieces

Item no. 22067 86410



Product highlights

- ▶ Handy lightweight tester for mobile use
- ▶ Deliverable with country specific mains socket and power plug (optional e.G. D, CH, F, GB)
- ▶ Device operation via only three buttons
- ▶ Measuring direct method or as differential current
- ▶ Test o.k. or not o.k. message allows the device to be used by persons with electro-technical training



TGK-DSM 0701-0702

Appliance Tester TGK-DSM 0701-0702 TGK-DSM+ 0701-0702

Appliance tester for testing safety measures in transportable electrical equipment in accordance with DIN EN 62638/ DIN VDE 0701-0702.

Measuring functions

- Protective conductor resistance
- Insulation resistance
- Substitute leakage current
- Protective conductor and touch current

Scope of delivery:

- 1x Appliance tester TGK-DSM 0701-0702 or TGK-DSM+ 0701-0702
- 1x Safety test line
- 1x Safety test tip
- 1x Crocodile clip
- 1x Serial cable
- 1x Operating manual
- 1x CD-ROM with Windows® standard PC software (D)

Tester information

- Memory for app. 4,000 equipment tests (internal)
- Intuitive operator guidance
- Manual mode, automatic mode
- Test examination for the protection of the tester against defect specimens
- Test o.k. or test not o.k. text message on display
- Test lead compensation
- RS 232 interface – for sending measured data
- included in delivery: Standard PC software for log print outs



TKG-DSM 0701-0702

Technical data

Display	4-line LCD display with backlighting
Display ranges	
Protective conductor resistance	0.10...2.00 Ω
Test current	$> \pm 200$ mA DC with automatic reversal of polarity
Open-circuit voltage	> 4 V DC
Insulation resistance	0.10...20.00 M Ω
Test voltage/current	≥ 500 V DC / > 1 mA
Substitute leakage current	0.10...20.00 mA
Test voltage	approx. 40 V AC
Protective conductor current	0.10...20.00 mA
Touch current	0.10...2.00 mA
Measuring principle	direct or as differential current

General

Mains fuse	F 16 A
Memory capacity (internal)	for approx. 4,000 equipment tests
Interfaces	RS-232
Limit value indication	optically and acoustically
Overvoltage category	CAT II 300 V
Degree of pollution	2
Protection degree	IP 40
Power supply	230 V $\pm 10\%$ / -15% 50 Hz
Consumption of auxiliaries	approx. 10 VA
Dimensions (L x W x H)	300 x 250 x 130 mm
Weight	approx. 3.0 kg
Electrical safety according to	DIN VDE 0404 Parts 1, 2 DIN VDE 0411-1/EN 61010-1 DIN VDE 0413/EN 61557 Parts 2, 4

Order information:

TKG-DSM 0701-0702

Item no. 60000 00200

Appliance tester in the case 300 mm

Measuring method direct

TKG-DSM+ 0701-0702

Item no. 60000 00210

Appliance tester in the case 300 mm

Measuring method as differential current

Recommended accessories

(not included in delivery)

Active three-phase adapter TGA

Item no. 79200 18691

Passive three-phase adapter TGP

Item no. 79200 18690

Adapter for checking extension cables

Item no. 79200 18680

Adapter for IEC connector

Item no. 79200 18660

TG brush probe

(for touchable conductive rotating parts)

Item no. 79100 86049

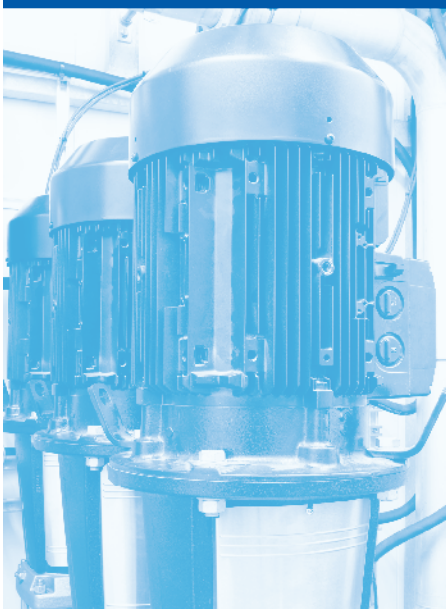
Interface converter from RS232 to USB

Item no. 32140 86043

Inspection sticker "Next test date"

30 mm, yellow, card of 12 pieces

Item no. 22067 86410



Product highlights

- ▶ The active three-phase adapter TGA is equipped with a 5-pole 32 A CEE socket and a 5-pole 32 A CEE plug as well as an earthed mains socket for connecting the appliance tester

The active three-phase adapter TGA enables the following tests to be conducted on devices with CEE plugs:

- ▶ Protective conductor test
- ▶ Insulation test L1, L2, L3, N to PE
- ▶ Touch current measurement
- ▶ Three-phase differential current measurement
- ▶ Measurement of the substitute leakage current
- ▶ Function test

Order information:

Active three-phase adapter TGA

Item no. 79200 18691



Active three-phase adapter TGA

The active three-phase adapter TGA enables electrical appliances equipped with a CEE plug to be connected to a TG appliance tester for testing mobile appliances in accordance with DIN EN 62638/DIN VDE 0701-0702.

Safety features and precautions

The active three-phase adapter TGA is designed and tested in accordance with the safety requirements of IEC 61010-1/EN 61010-1/VDE 0411-1.

When used correctly, the safety of the user and appliance is ensured.

A function test and all associated standard-related measurements can be conducted.

It is not possible to measure the electricity or power consumption of the three-phase test object – the values shown relate to the power consumption of the adapter itself.

It is not necessary to reverse the polarity L-N as with tests with a protective contact connection. The adapter functions irrespective of the L-N polarity of the testing device.

Technical data

Electrical safety	According to IEC 61010-1/EN61010-1/VDE0411-1
Protection class	I
Operating voltage	300 V
Test voltage	2.2 kV
Current-carrying capacity	3 x 32 A three-phase current, max. 3 x 40 A AC1
Own connection capacity	approx. 14 VA, $\cos\varphi = 0.25$
Overvoltage category	CAT II 300 V
Degree of pollution	2
EMC	EN 61326:2000/EN 61000-2/EN 61000-4
Protection degree	Housing IP 40, connections IP 20
Measuring range	Differential current 0.5 mA...20.0 mA
Intrinsic deviation	3% from measured value ± 0.2 mA
Operational measurement	6% from measured value ± 0.4 mA
Dimensions (L x W x H)	320 x 120 x 105 mm without wiring and grommets
Weight	2.6 kg



Product highlights

- ▶ The passive three-phase adapter TGP is equipped with the following CEE sockets: 5-pole 16 A, 5-pole 32 A and 3-pole 16 A
- ▶ In addition, it is also equipped with five 4 mm safety jacks to which three-phase appliances without fixed plugs can be connected, e.g. using quick-release clamps (not included) or conventional measurement cables.

The following tests can be conducted on devices with CEE plugs:

- ▶ protective conductor resistance test
- ▶ insulation resistance test (all phases short-circuited and individually)
- ▶ function test (only single-phase and 3-pole CEE socket)

Order information:

Passive three-phase adapter TGP
Item no. 79200 18690



Passive three-phase adapter TGP

The passive three-phase adapter TGP enables electrical appliances equipped with a CEE plug to be connected to a TG appliance tester for testing mobile appliances in accordance with DIN EN 62638/DIN VDE 0701-0702.

Safety features and precautions

The passive three-phase adapter TGP is designed and tested in accordance with the safety requirements of IEC 61010-1/ EN 61010-1/VDE 0411-1.

When used correctly, the safety of the user and appliance is ensured.

A function test and all associated measurements can be conducted exclusively on the single-phase, 3-pole CEE socket (blue).

It is not possible to test the functioning of three-phase appliances as the TG appliance tester only provides single-phase alternating current.

If a function test should be accidentally conducted with three-phase appliances, the safety of the testing device, the test object and the user is always ensured by an overcurrent protection circuit (resettable fuse) in the three-phase adapter TGP.

Technical data

Electrical safety	According to EN61010-1:2001/VDE0411-1
Protection class	I
Operating voltage	300 V
Test voltage	1.5 kV
Current-carrying capacity	16 A
Overcurrent protection circuit	200 mA (resettable fuse)
Overvoltage category	CAT II 300 V
Degree of pollution	2
EMC	EN 61326:2000/EN 61000-2/EN 61000-4
Protection degree	Housing IP 40, connections IP 20
Dimensions (L x W x H)	250 x 120 x 160 mm
Weight	approx. 1.2 kg

Order information:

ELEKTROmanager Professional

Item no. 79100 86120
1 licence per PC

ELEKTROmanager Enterprise

Item no. 79100 86130
1 licence per PC

fundamed Enterprise

Item no. 79100 86150
1 licence per PC

AddIn software interface
for ELEKTROmanager Professional
and Enterprise
Item no. 79100 86100

AddIn software interface
for fundamed
Item no. 79100 86110

MEBEDO PC software

ELEKTROmanager^{PROFESSIONAL} ELEKTROmanager^{ENTERPRISE}

MEBEDO ELEKTROmanager is the database software solution for measuring, assessing and documenting your equipment (according to DIN EN 62638/DIN VDE 0701-0702) as well as machines and installations (according to DIN VDE 0113, DIN VDE 0100).

ELEKTROmanager is available in the Enterprise and Professional versions: Enterprise is the solution for testing bodies and companies with several inspectors and branch offices. Professional is the software for self-employed persons who also conduct tests.

fundamed

MEBEDO fundamed is the database software solution for measuring, assessing and documenting your medical instruments and equipment (according to DIN EN 62353/DIN VDE 0751-1).

Further details on this database software are provided in the Customer Information PDF document at: www.mebedo.de (ELEKTROmanager and fundamed can also be downloaded for test purposes)

Order information:

Standard PC software

TG UNI 1 PROT (for TG euro/uni 1)
included in the scope of delivery for
WINDOWS® 95/98/ME/NT/2000/XP/
VISTA/7

Standard PC software

**MWTGW95 (TGK-DSM appliance
tester only)**
included in the scope of delivery for
WINDOWS® 95/98/ME/NT/2000/XP/
VISTA/7

Standard PC software

All TG appliance testers are supplied with the standard PC software.

This software is used to generate test protocols in either paper form (DIN A4 hardcopy) or electronic form (protocol file).

The software enables you to manage customer data and to specify testing intervals in the test protocol.

This software also enables you to export data into, for example, Excel® documents.

The image displays three screenshots of the MEBEDO PC software interface, which is used for generating test protocols and managing customer data. The interface is organized into several sections:

- Header Section:** Displays the 'Name Datenbank: MEBEDAT.DAT' and a 'Geräteidentifikation' field with the value '12345'.
- Form Section:** Contains various input fields for customer and equipment data, including 'Adresse', 'Seriennummer', 'Handlungsdatum', 'Messungsdatum', 'Ende und Spätestens', 'Prüfung nach Hersteller', 'YDE 3701', 'Sicherheitsklasse', 'Größe', 'Typenbezeichnung', 'Ser.-nummer', 'Stellen', 'Länge', 'P-Wert', and 'MWS'.
- Buttons:** Includes 'Seite löschen', 'Abbrechen', and 'Weiter' buttons.
- Footer Section:** Contains buttons for 'Datenbank neu erstellen', 'Datenbank öffnen', 'Datenbank löschen', 'Datenbank kopieren', 'Datenbank verschieben', 'Datenbank umbenennen', 'Datenbank löschen', 'Datenbank kopieren', 'Datenbank verschieben', 'Datenbank umbenennen', 'Datenbank löschen', 'Datenbank kopieren', 'Datenbank verschieben', 'Datenbank umbenennen', and 'Datenbank löschen'.

Accessories and Spare Parts



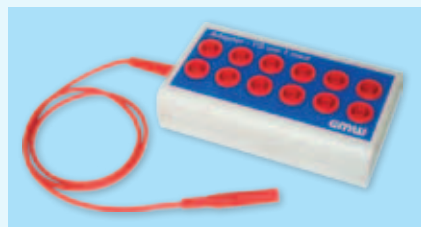
Barcode scanner



Active three-phase adapter TGA



Passive three-phase adapter TGP

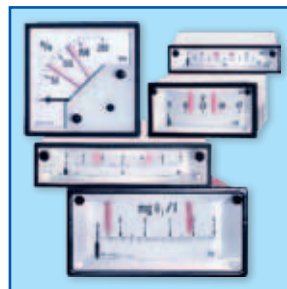


12 unit adapter

Item		Item no.
Barcode scanner	Type LTS 069 barcode scanner as optional accessory for connection to the interface RS232 of the TG/TE tester (except TGK-DSM)	79100 86044
Three-phase adapter TGA	Active three-phase adapter for fully test on devices with CEE plugs	79200 18691
Three-phase adapter TGP	Passive three-phase adapter for testing only the protective conductor and insulation resistance on devices with CEE plugs	79200 18690
12 unit adapter	12 unit extension adapter for the test line of the tester TG euro 1 med	61000 01001
Extension adapter	Adapter for checking extension cables	79200 18680
Adapter for IEC connector	Adapter for checking the cables with IEC connector	79200 18660
TG brush probe	flexible probe for checking touchable conductive rotating parts	79100 86049
SD card	SD memory card 2 GB	79100 86039
USB cable	USB connecting cable, plug A to plug B	79100 86047
USB adapter	Cable converter from RS232 interface to USB (for TGK-DSM tester only)	32140 86043
Serial cable	Serial connecting cable to PC for testers with only RS232 interface (TGK-DSM)	60000 00027/4
TG/TE accessories	Accessories set for TG euro 1 and TG/TE uni 1 tester, consisting of: 1 safety test line (red) 1 safety test tip (red) 1 crocodile clip (red)	79100 86048
	Accessories set for TGK-DSM tester, consisting of: 1 safety test line (black) 1 safety test tip (black) 1 crocodile clip (black)	79100 86040
Inspection sticker	Inspection sticker "Next test date" 30 mm, yellow, card of 12 pieces	22067 86410

Product Table

Analogue display units
Measuring transducers
Digital measuring instruments
Appliance testers
Contact devices
Text displays/printers
Bar graph displays
Probes
Accessories



Gilgen, Müller & Weigert

ZN der General Elektronik GmbH bei Magdeburg
 Kleinreuther Weg 88
 D-90408 Nuremberg, Germany
 Phone +49(0)911 35 02-0
 Fax +49(0)911 35 02-307
 Internet: <http://www.g-mw.de>
 e-mail: info@g-mw.de