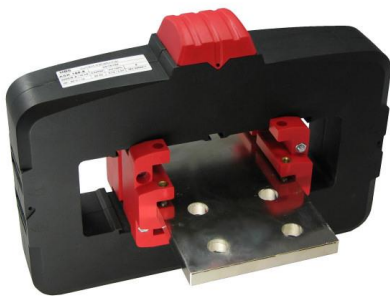


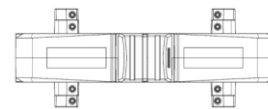
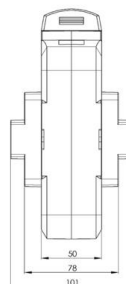
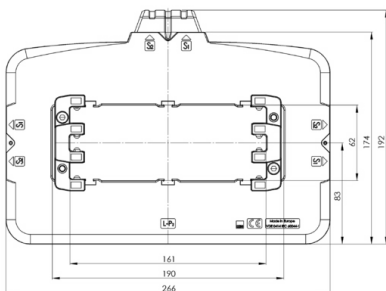
ASK 165.5 Plug-in current transformer

Plug-in current transformers with partly resin hardened measuring system and a newly developed variable mounting system for primary nominal currents from 1000 A up to 5.000 A, with a secondary nominal current of 5 A or 1 A (optional 2 A) accuracy classes 0.2, 0.5 and 1 (protection classes upon request).
Time saving connection in view of 3 variables positions of the secondary terminal connections (please state when ordering).



Dimensions:

Bus bar 1: 190 x 60 mm
Bus bar 2: 3 x 160 x 10 mm
Width: 266 mm
Height: 192 mm
Depth: 100 mm



Technical details:

Therm. nominal continuous current I_{cth} : 1,2 x I_N
Therm. nominal short-time current I_{th} : 60 x I_N , 1 sec.
Max. operating voltage U_m : 0.72kV (with clamping claw 1.2kV)
Isolation test voltage: 3 kV (with clamping claw 6 kV), U_{eff} , 50 Hz, 1 min.
Nominal rated frequency: 50 Hz
Isolation class: F

Further information:

Over-current limiting factor: See rating plate
Working temperature range: $-5^{\circ}\text{C} < T < +40^{\circ}\text{C}$
Storage temperature range: $-25^{\circ}\text{C} < T < +40^{\circ}\text{C}$
Unbreakable plastic housing made of black polycarbonate:
Flame resistant, ultrasonically welded
Nickel-plated secondary terminals with plus-minus nickel-plated screws:
M5x10mm
Secondary caps: integrated
Package quantity: 1 pcs.
Custom tariff number: 85043129

GMW Contact:

www.g-mw.de
info@g-mw.de

Phone: +49/9103 7129-0
Fax: +49/9103 7129-205/207