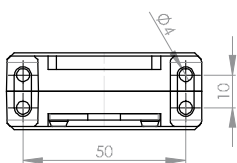
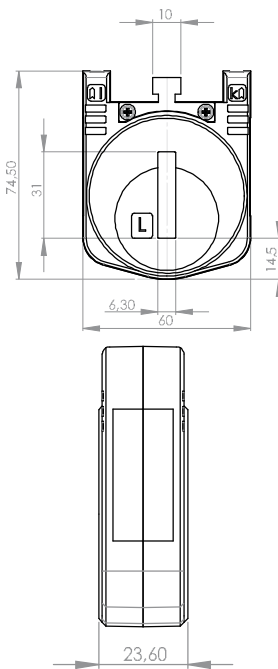




Bus bar 1 30 x 6 mm
 Transformer width 60 mm
 Height 74,5 mm
 Depth 24 mm



NH 6.2

Current transformer for fuse disconnectors

Primary current [A]	Burden [VA]	Secondary current [A] / Class	
		5 A Cl. 3 Art.-no.	1 A Cl. 3 Art.-no.
100	1,25	10050021	10050221
150	2,5	10050022	10050222
200	3,5	10050023	10050223
250	4	10050024	10050224
300	5	10050025	10050225
400	5	10050026	10050226

NH 6.2 2U

Current transformer for fuse disconnectors, secondary reconnectable

Primary current [A]	Burden [VA]	Secondary current [A] / Class	
		5 A Cl. 3 Art.-no.	1 A Cl. 3 Art.-no.
200-100	2,5-1,25	10050121	10050321
300-150	5-2,5	10050122	10050322
400-200	5-2,5	10050123	10050323

		Art.-no.
	Snap-on mounting	-
	Sealed shutter	-