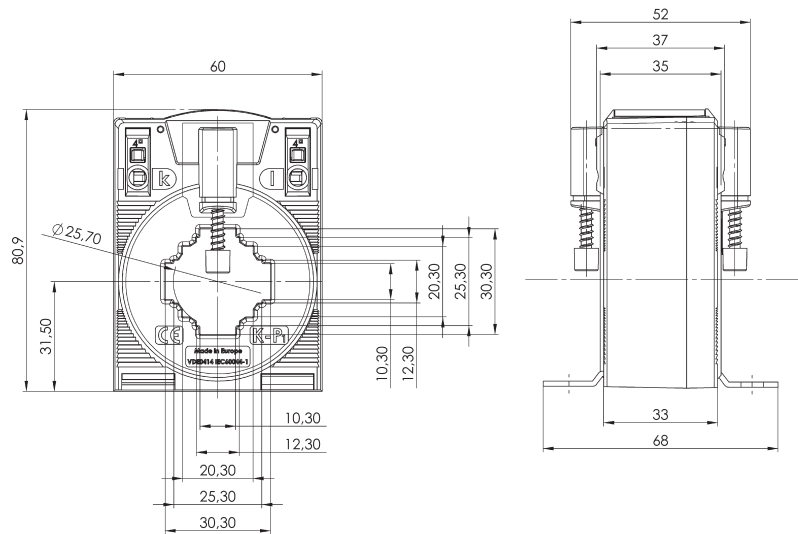


# XCTB 31.35

## Plug-in current transformers



### Dimensions:

Bus bar 1: 30 x 10 mm  
 Bus bar 2: 25 x 12 mm  
 Bus bar 3: 20 x 20 mm  
 Circular conductor: 25.7 mm  
 Installation width: 60 mm  
 Installation height: 80.9 mm  
 Overall installation depth: 52 mm

### Technical data:

Therm. nominal continuous current  $I_{cth}$ :  $1.2 \times I_N$   
 Therm. nominal short-time current  $I_{th}$ :  $60 \times I_N$ , 1 s  
 Max. operating voltage  $U_m$ : 1.2 kV,  $U_{rms}$   
 Insulation test voltage: 6 kV,  $U_{rms}$ , 50 Hz, 1 min  
**Lightning impulse voltage: 12 kV, 1.2/50  $\mu$ s**  
 Nominal frequency: 50/60 Hz  
 Technical standards applied: DIN EN 61869, Part 1 + 2  
 Harmonic measurements with load 0.2 VA – Sr pf1  
 Measuring accuracy up to 20 kHz:  $\epsilon \leq 2\% \mid \Delta\phi \leq 2^\circ @ 0.05\text{--}10 \text{ kHz}$   
 $\epsilon \leq 3\% \mid \Delta\phi \leq 3^\circ @ 10\text{--}20 \text{ kHz}$

### Ordering table for XCTB 31.35 with secondary current 5 A

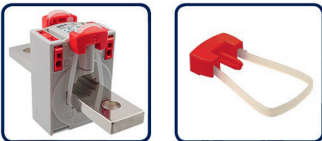
Secondary current		5 A				
Primary current [A]	Rated power [VA]	Accuracy class				
		1	0.5	0.5S	0.2	0.2S
		Order no.	Order no.	Order no.	Order no.	Order no.
60	1.25	10051-0001				
75	2.5	10051-0002				
80	2.5	10051-0003				
100	1.5		10051-0014	10051-0033	10051-0052	
	2.5	10051-0004	10051-0015	10051-0034		
125	1		10051-0016	10051-0035	10051-0053	10051-0067
	1.5		10051-0017	10051-0036	10051-0054	10051-0068
	2.5	10051-0005	10051-0018	10051-0037		
150	1.5		10051-0019	10051-0038	10051-0055	10051-0069
	2.5		10051-0020	10051-0039		
	5	10051-0006				
200	1.5		10051-0021	10051-0040	10051-0056	
	2.5		10051-0022	10051-0041	10051-0057	
	5	10051-0007	10051-0023	10051-0042	10051-0070	
250	2.5		10051-0024	10051-0043	10051-0058	10051-0071
	5		10051-0025	10051-0044	10051-0059	10051-0008
300	2.5		10051-0026	10051-0045	10051-0060	10051-0072
	5	10051-0009	10051-0027	10051-0046	10051-0061	10051-0073
400	5	10051-0010	10051-0028	10051-0047	10051-0062	10051-0074
500	2.5		10051-0029	10051-0048	10051-0063	10051-0075
	5	10051-0011	10051-0030	10051-0049	10051-0064	10051-0076
600	5	10051-0012	10051-0031	10051-0050	10051-0065	10051-0077
750	5	10051-0013	10051-0032	10051-0051	10051-0066	10051-0078

### Ordering table for XCTB 31.35 with secondary current 1 A

Secondary current		1 A				
Primary current [A]	Rated power [VA]	Accuracy class				
		1	0.5	0.5S	0.2	0.2S
		Order no.	Order no.	Order no.	Order no.	Order no.
50	0.5	10051-2001				
60	1.25	10051-2002				
75	2.5	10051-2003				
80	2.5	10051-2004				
100	1.5		10051-2015	10051-2034	10051-2053	
	2.5	10051-2005	10051-2016	10051-2035		
125	1		10051-2017	10051-2036	10051-2054	
	1.5		10051-2018	10051-2037	10051-2055	10051-2067
	2.5	10051-2006	10051-2019	10051-2038		
150	1.5		10051-2020	10051-2039	10051-2056	10051-2068
	2.5		10051-2021	10051-2040		
	5	10051-2007				
200	1.5		10051-2022	10051-2041	10051-2057	10051-2069
	2.5		10051-2023	10051-2042	10051-2058	10051-2070
	5	10051-2008	10051-2024	10051-2043		
250	2.5		10051-2025	10051-2044	10051-2059	
	5	10051-2009	10051-2026	10051-2045	10051-2071	
300	2.5		10051-2027	10051-2046	10051-2060	10051-2072
	5	10051-2010	10051-2028	10051-2047	10051-2061	
400	5	10051-2011	10051-2029	10051-2048	10051-2062	10051-2073
500	2.5		10051-2030	10051-2049	10051-2063	10051-2074
	5	10051-2012	10051-2031	10051-2050	10051-2064	
600	5	10051-2013	10051-2032	10051-2051	10051-2065	10051-2075
750	5	10051-2014	10051-2033	10051-2052	10051-2066	10051-2076

### Accessories

Quick-fix (order no.: 10055021)



Cover sealing (order no.: 10059057)



Snap-on mount for installing the transformer on a 35 mm DIN rail (order no.: 10055015)

