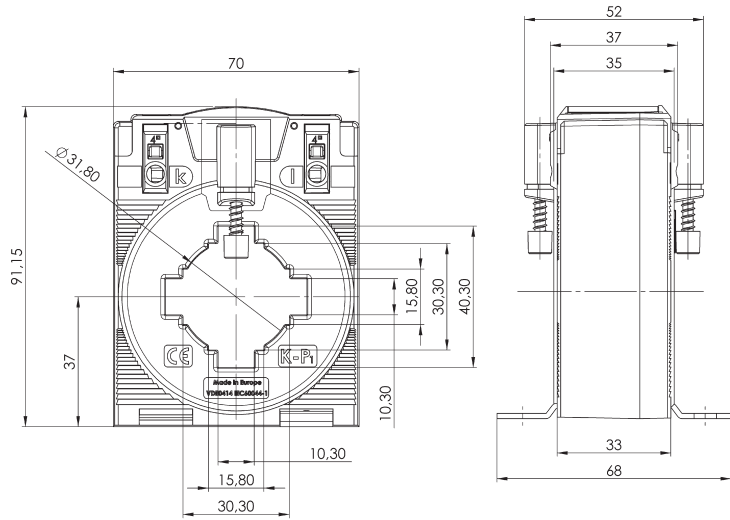


XCTB 41.35

Plug-in current transformers



Dimensions:

- Bus bar 1: 40 x 10 mm
- Bus bar 2: 30 x 15 mm
- Circular conductor: 31.8 mm
- Installation width: 70 mm
- Installation height: 91.15 mm
- Overall installation depth: 52 mm

Technical data:

- Therm. nominal continuous current I_{cth} : $1.2 \times I_N$
- Therm. nominal short-time current I_{th} : $60 \times I_N$, 1 s
- Max. operating voltage U_m : 1.2 kV, U_{rms}
- Insulation test voltage: 6 kV, U_{rms} , 50 Hz, 1 min
- Lightning impulse voltage: 12 kV, 1.2/50 μ s**
- Nominal frequency: 50/60 Hz
- Technical standards applied: DIN EN 61869, Part 1 + 2
- Harmonic measurements with load 0.2 VA – Sr pf1
- Measuring accuracy up to 20 kHz: $\varepsilon \leq 2\% \mid \Delta\phi \leq 2^\circ @ 0.05\text{--}10 \text{ kHz}$
 $\varepsilon \leq 3\% \mid \Delta\phi \leq 3^\circ @ 10\text{--}20 \text{ kHz}$

Ordering table for XCTB 41.35 with secondary current 5 A

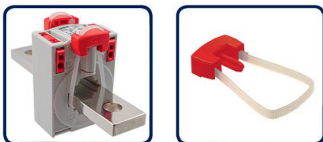
Secondary current		5 A				
Primary current [A]	Rated power [VA]	Accuracy class				
		1	0.5	0.5S	0.2	0.2S
		Order no.	Order no.	Order no.	Order no.	Order no.
125	2.5	10051-0101				
150	2.5	10051-0102				
200	1.5		10051-0112	10051-0126		
	2.5		10051-0113			
	5	10051-0103				
250	2.5		10051-0114	10051-0127		
	5	10051-0104				
300	2.5		10051-0115	10051-0128		
	5	10051-0105	10051-0116			
400	5	10051-0106	10051-0117	10051-0129		
500	2.5		10051-0118	10051-0130	10051-0136	
	5	10051-0107	10051-0119	10051-0131		
600	2.5		10051-0120	10051-0132	10051-0137	10051-0141
	5	10051-0108	10051-0121	10051-0133	10051-0138	
750	2.5		10051-0122	10051-0134	10051-0139	10051-0142
	5	10051-0109	10051-0123	10051-0135	10051-0140	10051-0143
800	5	10051-0110	10051-0124			
1000	5	10051-0111	10051-0125			

Ordering table for XCTB 41.35 with secondary current 1 A

Secondary current		1 A				
Primary current [A]	Rated power [VA]	Accuracy class				
		1	0.5	0.5S	0.2	0.2S
		Order no.	Order no.	Order no.	Order no.	Order no.
75	1	10051-2101				
80	1	10051-2102				
100	1.25	10051-2103				
125	2.5	10051-2104				
150	2.5	10051-2105				
200	1.5		10051-2115	10051-2129		
	2.5		10051-2116			
	5	10051-2106				
250	2.5		10051-2117	10051-2130		
	5	10051-2107				
300	2.5		10051-2118	10051-2131		
	5	10051-2108	10051-2119			
400	5	10051-2109	10051-2120	10051-2132		
500	2.5		10051-2121	10051-2133	10051-2139	
	5	10051-2110	10051-2122	10051-2134		
600	2.5		10051-2123	10051-2135	10051-2140	
	5	10051-2111	10051-2124	10051-2136	10051-2141	
750	2.5		10051-2125	10051-2137	10051-2142	
	5	10051-2112	10051-2126	10051-2138		
800	5	10051-2113	10051-2127			
1000	5	10051-2114	10051-2128			

Accessories

Quick-fix (order no.: 10055021)



Cover sealing (order no.: 10059057)



Snap-on mount for installing the transformer on a 35 mm DIN rail (order no.: 10055015)

